

the
Champion
LIMITED SERIES



Built Better—Backed Longer—10-Year Warranty*

**Ask for complete details.*

Due to continuous product development and improvement, prices, specifications and materials are subject to change without notice or obligation. Square footage and other dimensions are approximate. Included images are artist renderings and are not intended to be an accurate representation of the home. Renderings and floor plans may be shown with optional features and/or third-party additions that may not be available in all regions or situations.



CHAMPION
HOME BUILDERS CO.

6420 W. Allison | Chandler, AZ 85226

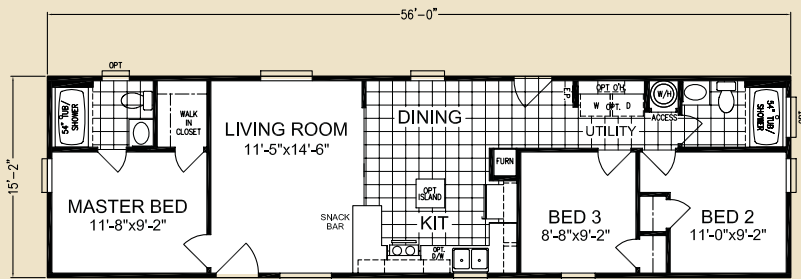
T- (877) 738-8838 | F- (520) 796-8701



Model LT-1656

3 Bed - 2 Bath

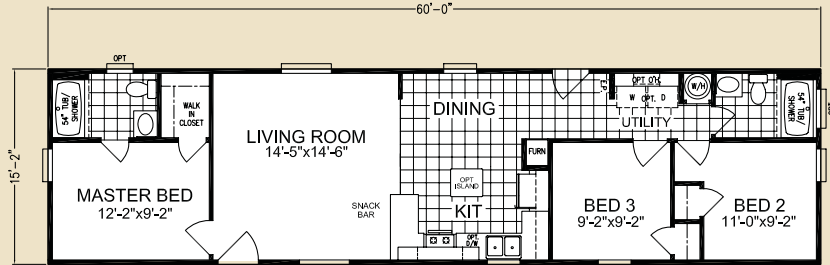
849 Sq. Ft. *approx*



Model LT-1660

3 Bed - 2 Bath

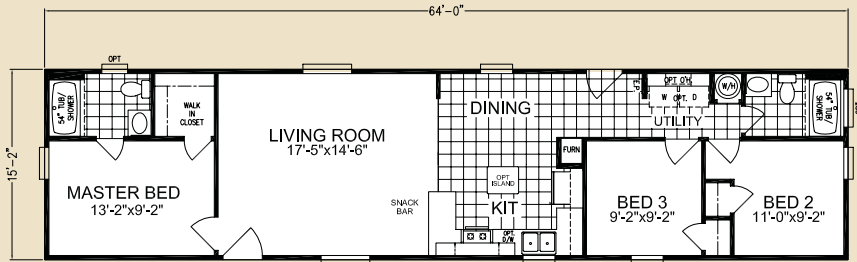
910 Sq. Ft. *approx*



Model LT-1664

3 Bed - 2 Bath

971 Sq. Ft. *approx*



Model LT-2448

3 Bed - 2 Bath

1120 Sq. Ft. *approx*



Model LT-2452

3 Bed - 2 Bath

1213 Sq. Ft. *approx*





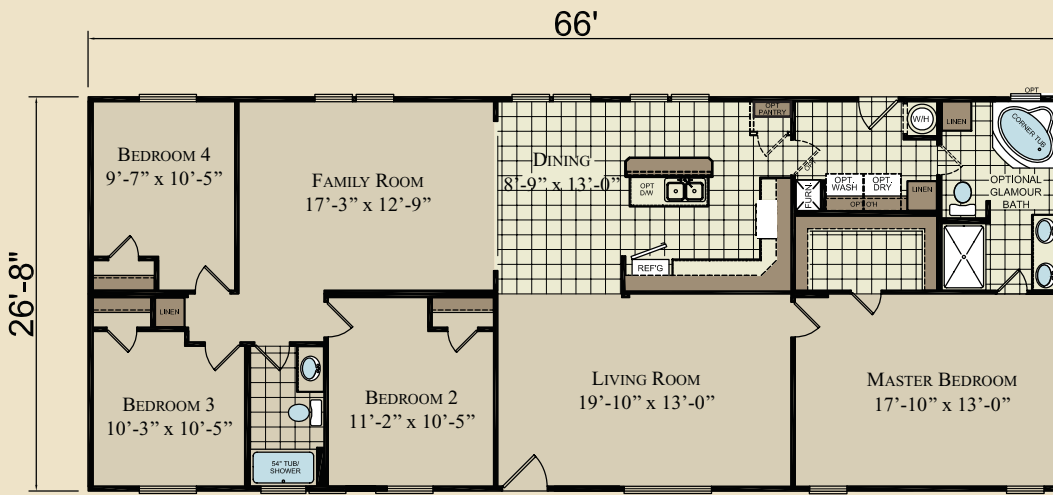
Model LT-2852
3 Bed - 2 Bath
1387 Sq. Ft. *approx*



Model LT-2856
3 Bed - 2 Bath
1493 Sq. Ft. *approx*



Model LT-2856
4 Bed - 2 Bath
1493 Sq. Ft. *approx*



Model LT-2866
4 Bed - 2 Bath
1760 Sq. Ft. *approx*



FEATURES

► CONSTRUCTION

- ROLLED STEEL I-BEAM FRAME
- 2X6 FLOORS ON 16" CENTERS
- 2X4 EXTERIOR WALLS ON 16" CENTERS
- 96" / 8' FOOT SIDE-WALLS
- 10' MARRIAGE LINE INTERIOR WALLS
- DUAL PANE METAL WINDOWS
- RESIDENTIAL ROCKER SWITCHES
- 20 POUND RATED RAFTER
- 100 AMP ELECT. W/COPPER WIRES
- R-22 ROOF, R-11 WALLS, R-14 FLOOR
- 6" SIDE-WALL EAVES D/W ONLY
- 3" SIDEWALL EAVES S/W ONLY
- CPVC PLUMBING SYSTEMS
- 30 GAL. ELECTRIC WATER HEATER
- DETACHABLE HITCH
- WASHER/DRYER HOOKUPS
- GAS FURNACE
- SHUT-OFF VALVES T/O

► KITCHEN

- QUALITY GE APPLIANCES
- 18' DD FF REFER
- 30" GAS RANGE
- HIGH PRESSURE LAMINATE COUNTERTOPS WITH FLAT SELF EDGE
- FACTORY BUILT CABINETS W/HIDDEN HINGES
- PAINTED BACKS INSIDE CABINETS
- MDF RAISED PANEL CABINET DOORS
- FIXED SHELVES IN BASE & OVERHEAD CABINETS
- 9" DEEP ACRYLIC KITCHEN SINK
- 30" LIGHTED HOOD RANGE
- DUAL METAL DRAWER GUIDES

► BATHS

- MDF RAISED PANEL CABINETS
- POWER VENT ALL BATHS
- TUB SURROUND ALL MASTER BATHS
- TUB SURROUND HALL BATH
- CHINA LAVYS BOTH BATHS
- HIGH PRESSURE LAMINATE BACK-SPLASH
- DELUXE 2 BULB FIXTURE IN BOTH BATHS
- LAMINATED FLAT EDGE COUNTERTOPS

► EXTERIORS

- SMART PANEL WOOD EXTERIOR SIDING
- 2 COLOR EXTERIOR PAINT
- COMPOSITION SHINGLE ROOF
- OVERSIZED 72" PICTURE WINDOW IN L/R D/W ONLY
- HIGH EFFICIENCY VENTED EAVES
- TRIM ALL EXTERIOR WINDOWS AND DOORS
- INSULATED 6-PANEL IN-SWING FRONT DOOR WITH DEADBOLT & PEEP HOLE
- IN-SWING COTTAGE DOOR W/DEAD BOLT
- LIGHTS AT ALL EXTERIOR DOORS

► INTERIORS

- VAULTED CEILING T/O
- ORANGE PEEL TAPE & TEXTURE WHITE PAINTED WALLS & CEILING
- ALL WHITE FLAT PANEL INTERIOR DOORS W/3 HINGES
- SQUARE CORNERS ALL DRYWALL
- BRUSHED CHROME DOOR KNOBS
- WHITE BEVELED RESIDENTIAL DOOR TRIM
- DESIGNER VALANCES ALL WINDOWS
- WOOD CLOSET SHELF AND ROD
- UTILITY ROOM SHELF
- 18oz CARPET W/REBOND PAD

Your FREE CHOICE Menu Options:

Customers may choose 2 FREE options from the following list.

1. DESIGNER NICHE ON L/R WALL FOR FLAT SCREEN TV INCLUDES TV JACK AND RECEPT
2. TAPE & TEXTURE ARCH DIVIDER BETWEEN L/R AND KIT D/W ONLY
3. 2 CEILING FANS WITH LIGHT KITS AND BR CEILING LIGHTS IN OTHER BR'S
4. BASEBOARD MOLDING INSTALLED
5. DOOR BELL AND LEVER DOOR HANDLES ON ALL INTERIOR DOORS
6. CROWN MOLDING ABOVE CABINETS IN KITCHEN

This is a limited introductory offer good until 9/30/08

